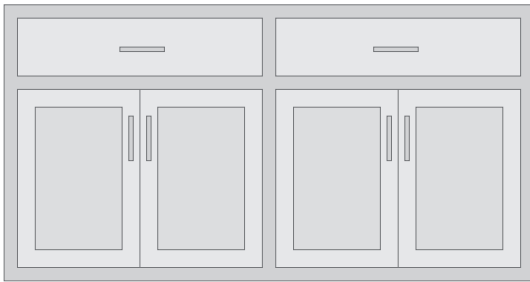


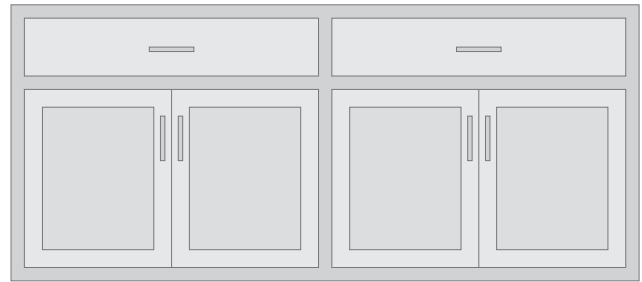
Our SYO inset buffets and credenzas features door and drawer faces slightly recessed into the case frame. Then you can choose drawer/door configuration you prefer, top style, type of drawer and door fronts, style of legs, and finally the style of hardware you want.



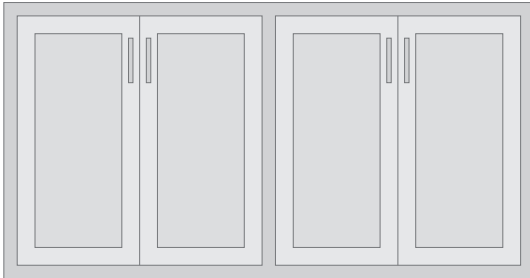
STEP 1 | CHOOSE INSET BUFFET OR CREDENZA



Inset Buffet, 60"
59½" w x 18" d x 31" h* ESG29C



Inset Buffet, 72"
70½" w x 18" d x 31" h* ESG29D



Inset Credenza, 60"
59½" w x 15" d x 31" h* ESH23C



Inset Credenza, 72"
70½" w x 15" d x 31" h* ESH23D

*Size does not include top and feet.

STEP 2 | CHOOSE TOP



Top with Trim
EST-CH
Adds 1" to overall height.
Adds 2" to overall width.



Top with Large Bevel
EST-LB
Adds 1" to overall height.
Adds 1½" to overall width.



Top with 1/8" Overhang
EST-MO
Adds 1" to overall height.
Adds ¼" to overall width.



Top with 3/4" Overhang
EST-TR
Adds 1" to overall height.
Adds 1½" to overall width.



Top with Reverse Bevel
EST-RB
Adds 1" to overall height.
Adds 2" to overall width.

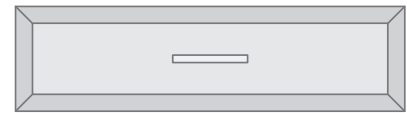
STEP 3 CHOOSE INSET DRAWER FRONT



Flat Slab
ESS-FS



Flat Panel
ESS-FP



Raised Panel
ESS-RP



Beaded Edge
ESS-BE

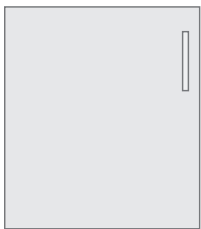


Step Panel
ESS-SP

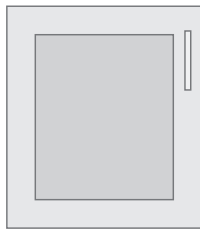


Scalloped Panel
ESS-SC

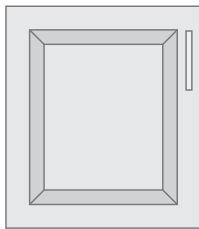
STEP 4 CHOOSE INSET DOOR FRONT



Flat Slab Door Front
ESR-FS



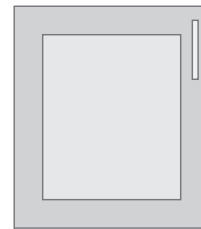
Flat Panel Door Front
ESR-FP
Glass Options Available



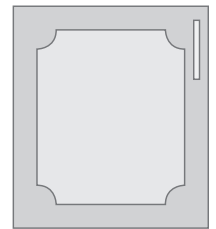
Raised Panel Door Front
ESR-RP



Beaded Edge Door Front
ESR-BE

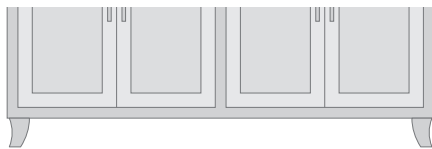


Step Panel Door Front
ESR-SP

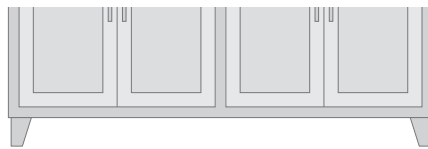


Scalloped Panel Door Front
ESR-SC

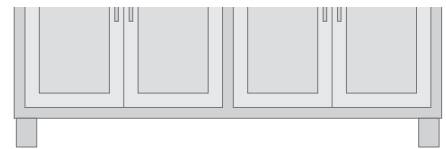
STEP 5 CHOOSE LEG/BASE



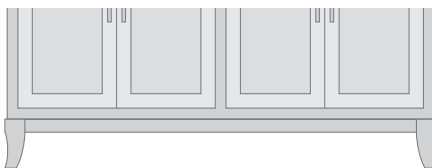
4" Curved Leg
ESL-CH, Adds 4" to overall height.



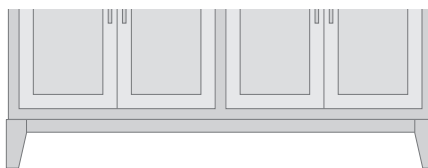
4" Tapered Leg
ESL-TR, Adds 4" to overall height.



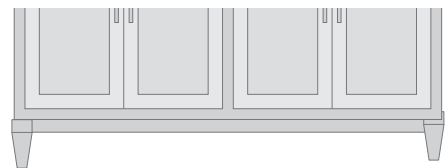
4" Square Leg
ESL-MO, Adds 4" to overall height.



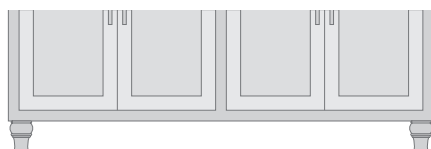
7" Curved Leg
ESL-CH-7, Adds 7" to overall height.



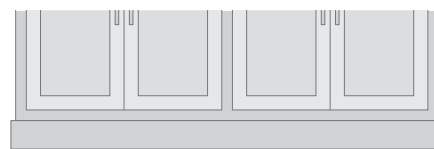
7" Tapered Leg
ESL-TR-7, Adds 7" to overall height.



7" Round Tapered Leg
ESL-RD-7, Adds 7" to overall height.



4" Turned Leg
ESL-TU, Adds 4" to overall height.



4" Plinth Base
ESL-PL, Adds 4" to overall height.

STEP 6 CHOOSE HARDWARE

Level A hardware is standard. See the Simply Amish Features and Options book for complete selection.

Door and drawer faces and their edge are exposed. Choose the style, size, top style, drawer front, leg, and hardware.



STEP 1 CHOOSE FULL OVERLAY BUFFET



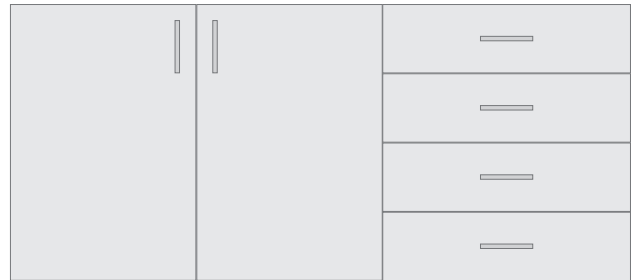
Full Overlay Center Buffet, 60"
59½" w x 18" d x 31" h* ESFUL-G29C



Full Overlay Center Buffet, 70"
70½" w x 18" d x 31" h* ESFUL-G29D



Full Overlay Offset Buffet, 60"
59½" w x 15" d x 31" h* ESFUL-G30C



Full Overlay Offset Buffet, 70"
70½" w x 15" d x 31" h* ESFUL-G30D

*Size does not include top and feet.

STEP 2 CHOOSE TOP



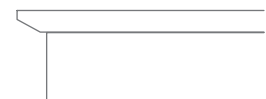
Top with Large Bevel
EST-LB
Adds 1" to overall height.
Adds 1½" to overall width.



Top with 1/8" Overhang
EST-MO
Adds 1" to overall height.
Adds ¼" to overall width.



Top with 3/4" Overhang
EST-TR
Adds 1" to overall height.
Adds 1½" to overall width.

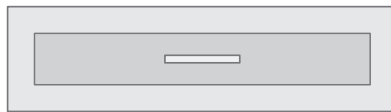


Top with Reverse Bevel
EST-RB
Adds 1" to overall height.
Adds 2" to overall width.

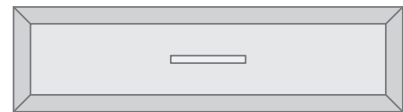
STEP 3 CHOOSE FULL OVERLAY DRAWER FRONT



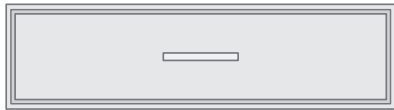
Flat Slab
ESS-FS



Flat Panel
ESS-FP



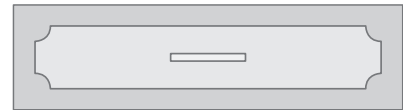
Raised Panel
ESS-RP



Beaded Edge
ESS-BE



Step Panel
ESS-SP

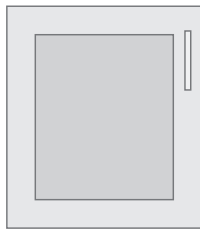


Scalloped Panel
ESS-SC

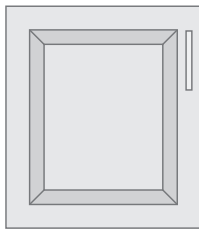
STEP 4 CHOOSE FULL OVERLAY DOOR FRONT



Flat Slab Door Front
ESR-FS



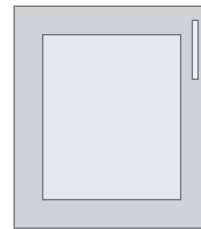
Flat Panel Door Front
ESR-FP
Glass Options Available



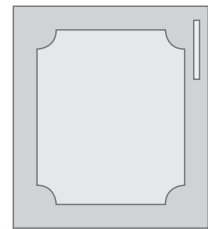
Raised Panel Door Front
ESR-RP



Beaded Edge Door Front
ESR-BE



Step Panel Door Front
ESR-SP



Scalloped Panel Door Front
ESR-SC

STEP 5 CHOOSE LEG/BASE



Angled Leg
ESFUL-L-AN, Adds 4" to overall height.



Cutout Base
ESFUL-L-CO, Adds 4" to overall height.



T-Base
ESFUL-L-TB, Adds 4" to overall height.

STEP 6 CHOOSE HARDWARE

Level A hardware is standard. See the Simply Amish Features and Options book for complete selection.